

# Scio Township

## Land Tables

### Residential Land Tables

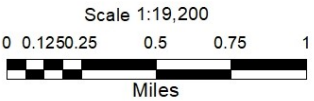
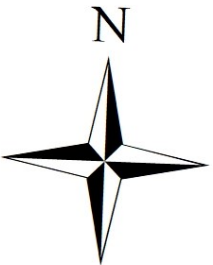
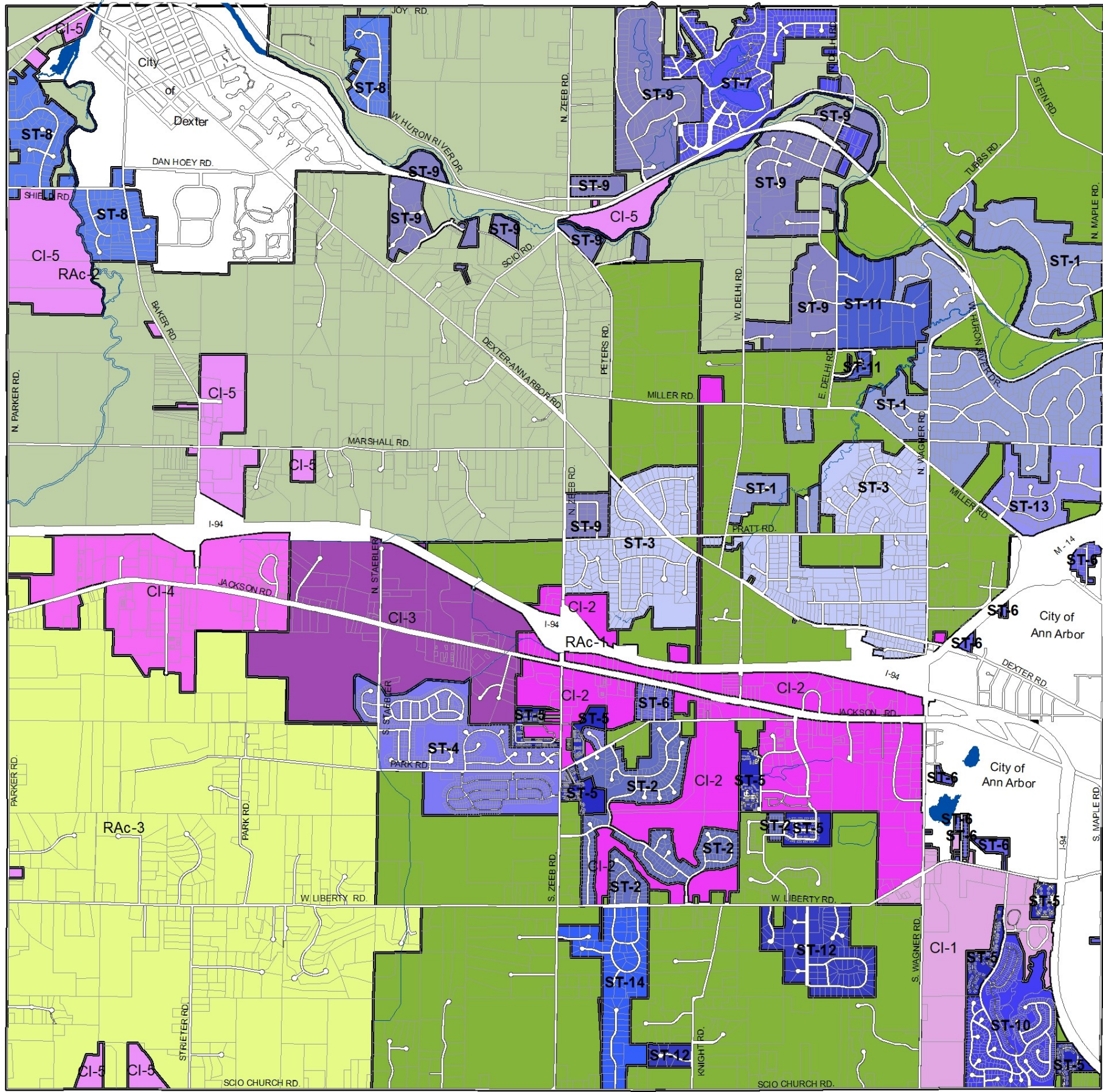
- ST-1, EASTERN ESTATES, NO S/W
- ST-10, EASTERN NEIGHBORHOODS, WITH S/W
- ST-11, HOLDEN DR NEIGHBORHOODS
- ST-12, SAGINAW HILLS NEIGHBORHOODS
- ST-13, WALNUT RIDGE
- ST-14, BANDERA/HIGH HOLLOW
- ST-2, EASTERN ESTATES, WITH S/W
- ST-3, CENTRAL NEIGHBORHOODS, NO S/W
- ST-4, CENTRAL NEIGHBORHOODS, WITH S/W
- ST-5, CONDOMINIUMS
- ST-6, BUENA VISTA AND ANNEX AREA
- ST-7, LOCH ALPINE
- ST-8, WESTERN DSD NEIGHBORHOODS
- ST-9, CENTRAL DSD NEIGHBORHOODS, NO S/W

### Commercial & Industrial Land Tables

- CI-1, SOUTHEAST CORNER
- CI-2, EASTERN JACKSON ROAD
- CI-3, CENTRAL JACKSON ROAD
- CI-4, WESTERN JACKSON ROAD
- CI-5, BAKER ROAD CORRIDOR

### Acreage Land Tables

- RAC-1, ANN ARBOR SCHOOLS
- RAC-2, DEXTER SCHOOLS NORTH
- RAC-3, DEXTER SCHOOLS SOUTH
- City/Village



Date Printed: January 31, 2023

Property of Scio Township  
Reproduced with permission only  
Prepared by Scio Township GIS